

Shakespeare

JULIUS CAESAR

Donmar Warehouse

Power, betrayal, justice. **Phyllida Lloyd** directs a cast including **Dame Harriet Walter** in Shakespeare's great political drama. Part of the Donmar Warehouse's **all-female** Shakespeare Trilogy.

Set in the present day in the world of a women's prison, *Julius Caesar* could not be more timely as it depicts the catastrophic consequences of a political leader's extension of his powers beyond the remit of the constitution. As Brutus (Harriet Walter) wrestles with his moral conscience over the assassination of Julius Caesar (Jackie Clune), Mark Antony (Jade Anouka) manipulates the crowd through his subtle and incendiary rhetoric to frenzied mob violence. There follows the descent of the country into factions and the outbreak of civil war.

The Donmar Shakespeare trilogy began in 2012 with this diverse, all-female *Julius Caesar* which asks the question "Who owns Shakespeare?" *Julius Caesar* was followed by *Henry IV* (2014) and *The Tempest* (2016), each production enthraling audiences in London and New York, and was shared with women and girls in prisons and school across the UK. All three parts of this new Trilogy will be released by Opus Arte throughout 2019, offering screen audiences unique access to these ground-breaking productions.

Harriet Walter	Brutus
Jane Anouka	Mark Antony
Jackie Clune	Julius Caesar
Shiloh Coke	Cinna the Poet
Karen Dunbar	Casca
Clare Dunne	Portia / Octavius Caesar
Leah Harvey	Soothsayer
Zainab Hasan	Calpurnia / Metellus Cimber
Jennifer Joseph	Trebonius
Martina Laird	Cassius
Carolina Valdés	Dog / Cinna

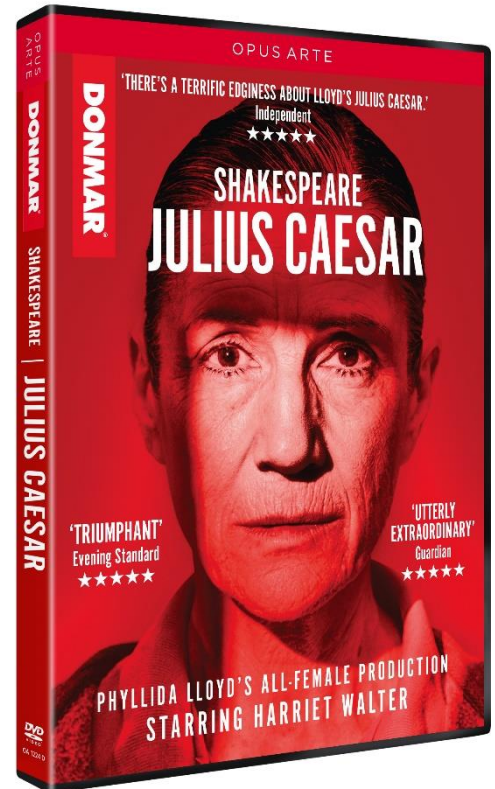
Stage Director Phyllida Lloyd

Catalogue number: OA1224D (DVD)

Barcode: 809478012245 (DVD)

Running time: 153 minutes

Sound format: Dolby Digital 2.0 - Dolby Digital 5.1 (DVD)



1 X DVD

Extra Features: An All Female Trilogy; Power and Politics; Performing Gender; Brutus & Caesar; Staging Violence; Insights on 'He doth bestride the Narrow World', 'Friends, Romans, Countrymen'; A Director's Process, with Phyllida Lloyd; Trailer; Introduction to the Play; The Plot

"One of the most important theatrical events of the past 20 years." (*The Observer* ★★★★★)

"Lloyd's account of *Julius Caesar* seethes with menace, and here the prison setting makes perfect sense" (*Evening Standard* ★★★★★)

